


LI MIAS SOL

yoo
Inspired by
STARCK



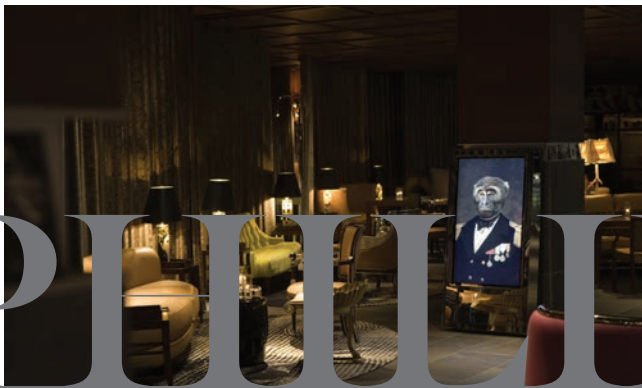
“WE OFFER PEOPLE FREEDOM,
FLEXIBILITY AND SIMPLICITY”

—PHILIPPE STARCK

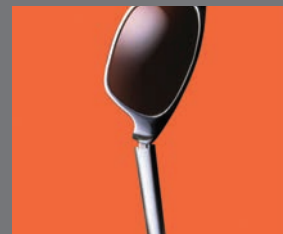
A black and white portrait of a man with a beard and short hair, looking directly at the camera. He is resting his chin on his right hand. The background is a plain, dark grey.

Starck's interior design projects are truly outstanding, breaking through old design concepts and always surprising and innovative. His influence on the way we live now is everywhere – in our uses of colour, materials and space, and in a desire for good design at every juncture. His designs offer freedom of choice, flexibility and simplicity.

A SHARED BELIEF



PHILIPPE STARCK





FIRST BRANDED CYPRUS PROJECT BY YOO

YOO Limassol is Starck's first and last project in the past twelve years to be named YOO by Starck, also it is the first branded residential project in Cyprus.



CITY
FOR YOO
ONLY

An aerial photograph of a beach. The water is a vibrant turquoise color, with white foam from waves breaking onto the shore. The sand is a bright, golden-yellow color. The text 'FROM SEA TO SKY' is overlaid on the left side of the image in a light beige, serif font.

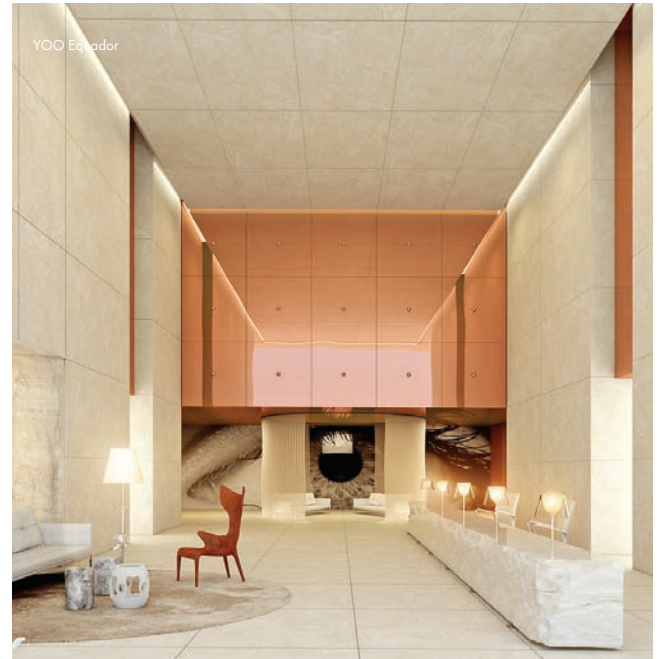
FROM
SEA
TO
SKY



YOO Miami



LIVE
ELEGANTLY



The exclusive YOO Limassol Resort, Limassol's premier high-end seafront property designed in cooperation with famous Philippe Starck.

WHERE YOU ARE





LIMASSOL

TOWARDS PAPHOS

AGIOS ATHANASIOS

YERMASOIA

MOUTTAGIAKA

AGIOS TYCHONAS

TOWARDS NICOSIA AND LARNACA

YERMASOIA

AGIOS ATHANASIOS

TOWN CENTRE

ST. RAPHAEL MARINA

MOLOS

LIMASSOL MARINA

NICOSIA

FAMAGUSTA

CYPRUS

PAPHOS

LARNACA

Limassol

THE MEDITERRANEAN SEA



40 min

40 min

50 mins

1hr

40 min

1hr 20min

Larnaka

Pafos

Nicosia

Ayia Napa

Troodos

Latsi

LIMASSOL

yoo
Inspired by STARC

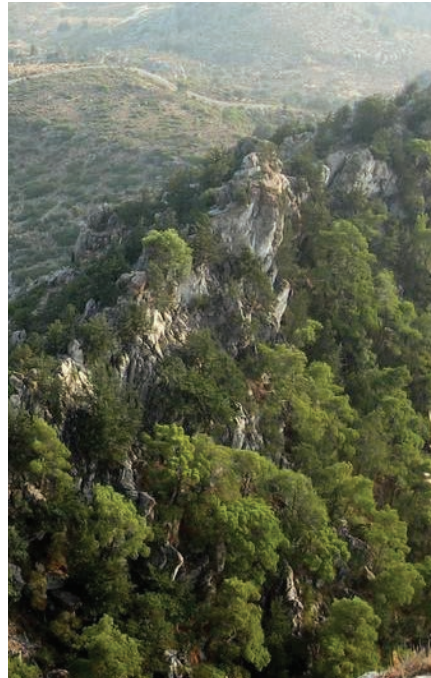
FROM THE SEA TO THE SKY



WATER



ROCK



GREENERY



SKY

The interior design concept is inspired by Cyprus's surrounding environment: water, rocks, greenery and sky.
A spectacular journey from the sea to the sky to create a seamless connection with the outdoor spaces.

CONCEPTUAL MASTER PLAN



The themes will be divided through zoning:

The villas are immersed into lush greenery giving the idea of an oasis in the middle of the dry surroundings;

Opening up to the sky, the apartments have a lighter feel. The unobstructed view to the ocean conveys the feeling of being on a boat sailing over the sea;

YOU ARE HERE



TOTAL AREA	113,800 SQM
GREEN AREA	45,000 SQM
3-6 BEDROOMS VILLAS	83
1-5 BEDROOMS APARTMENTS	85
CLUB HOUSE	1,500 SQM
SAND BEACH LINE	400 M

BEACH FRONT



LI
MAS
SOL

yoo
Inspired by
STARCK

Choose from 83 beachfront villas and apartments and indulge in the Resort's many unique facilities, all while tucked away in a secluded cove along the Limassol's golden coastline, enjoying ultimate privacy.





LI
MAS
SOL
yoo



SPOIL YOURSELF
WITH
SERVICES

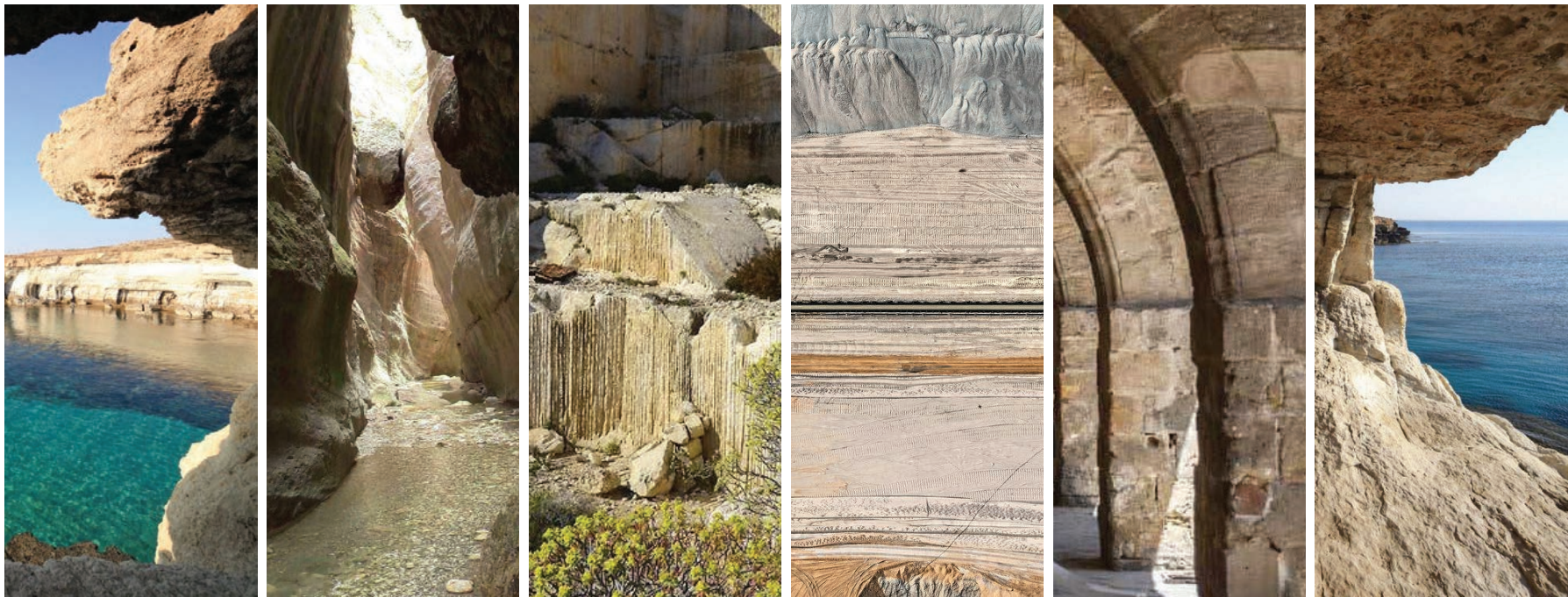


Club Centro

CLUB HOUSE INSPIRATION

LI
MAS
SOL

yoo
Inspired by
SPACE



The Clubhouse will have a rocky and dry feel to reflect the concept of a cave to convey an elegant, quiet and relaxing atmosphere.



YOO Miami

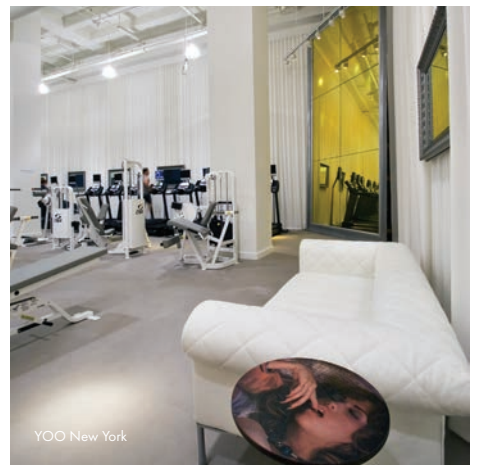


YOO Miami

- Spa
- Gym
- Cinema
- Kids Club
- Business Centre
- Cigar Lounge



YOO Manila



YOO New York

OUT DOOR



- Mini Golf
- Tennis Court
- Outdoor Gym
- Bocce
- Water Sports
- Yoga and pilates



AMENITIES



YOO Puerto Vallarta



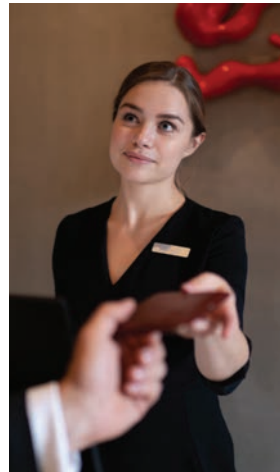
YOO New York

- Labirint
- Amaphitheatre and cinema
- Playground
- Kids pool
- Chappel
- Botanical gardens
- Pool Bar



YOO Thailand

SERVICES



Concierge

24 Hour Security
Services

Domestic Management

Pharmacy

Medical Center

Dry Cleaning

Shops

Bakery

Limousine Services

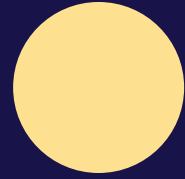
Private Jet Club

Sports Car Club

Yacht Club

Private Shopping





WHAT STYLE WILL
YOU CHOOSE?



YOO St Petersburg

YOO LIMASSOL offers a choice of apartments and villas in CULTURE and NATURE styles – so that residents can choose the most suitable for them.

The styles were chosen for a reason – Starck wanted thereby to highlight the beautiful nature of Cyprus and the rich history of the island.



YOO Manila

CULTURE





The Culture palette is the perfect marriage of past and present; the coming together of the most beautiful and exquisitely produced objects and ideas from yesterday, placed alongside the most amazing designs of today.

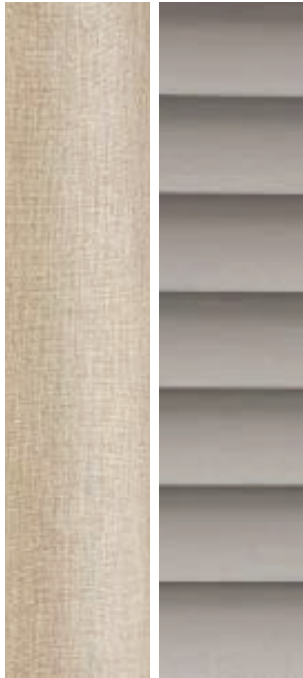
Rooted in richness and boldness, the palette has a powerful sense of history, but is always looking forward.

CULTURE INSPIRATION

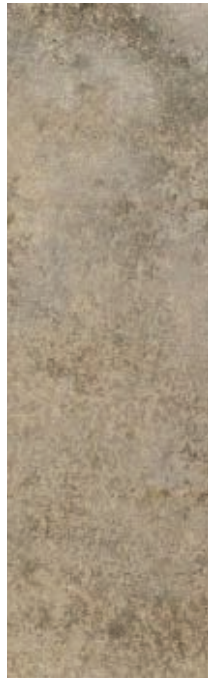


Set in a wild natural setting, the villas show textured materials and warm tones combined with a spectacular garden, for an harmonious feel and a strong connection with nature.

CULTURE MATERIALS



Taupe curtain &
Silver shades



Montpelier
Limestone



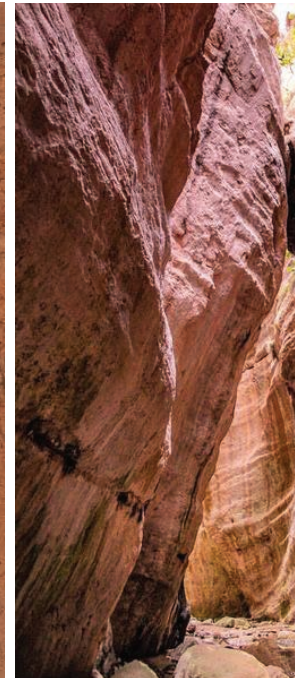
Red cedar
wood



Lush garden



Copper



Earthy tones



Ivory Venetian
stucco

Warm dark hues are chosen to blend with the landscape to create a sense of harmony and peace.
These are to be locally sourced wherever possible.

CULTURE THE GARDEN



The heart of the villa, this outdoor living is where the residents will enjoy a very relaxing experience in a wild natural setting.

CULTURE THE LIVING AREAS



Olive tree timber, comfortable and soft furniture as well as open connections with the garden characterise the living areas to create a seamless connection with the surrounding nature.

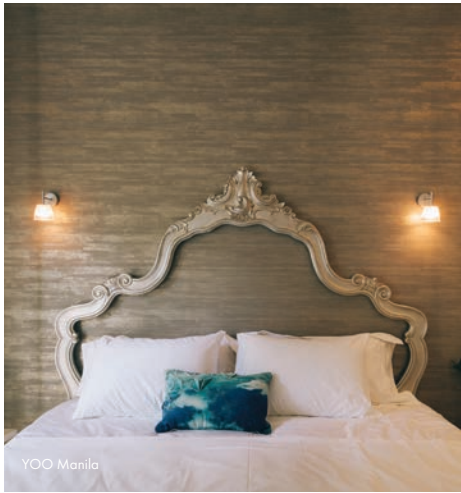
CULTURE THE BEDROOMS



The natural stone and wooden furniture marries with the surrounding elements of the nature.
The large balcony adds a sense of exclusivity to the bedrooms.

NATURE





The Nature palette is one that evokes a sense of purity and simplicity. It derives its inspiration from the deep rooted desire and passion of city dwellers to bring the essence of nature into the urban environment. With colours and materials from a soft spectrum of natural hues; it is the palette of choice for those who love to live immersed in the feeling of fresh air, blue skies and soft sunrises.



NATURE THE BEDROOMS



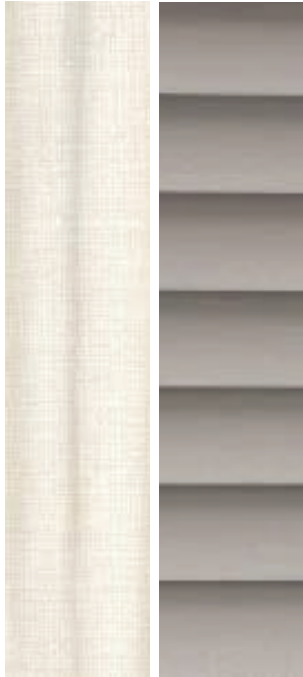
The room design emphasizes the view whenever possible, creating seamless interior spaces that blend into the landscape.

NATURE INSPIRATION

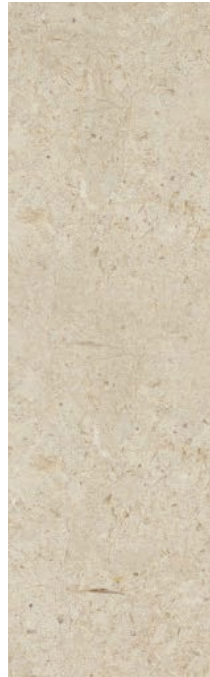


Further up, opening up to the sky and with clear views towards the sea, the apartments have breezy and light feeling, to convey the idea of sailing on a boat in the open sea.

NATURE MATERIALS



Ivory curtain &
Silver shades



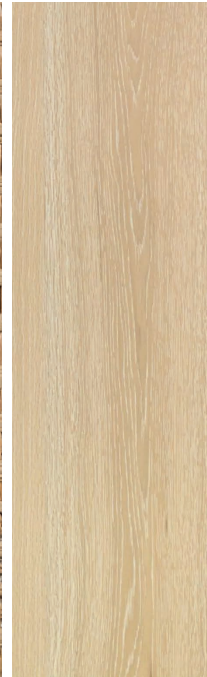
St. Remy
Limestone



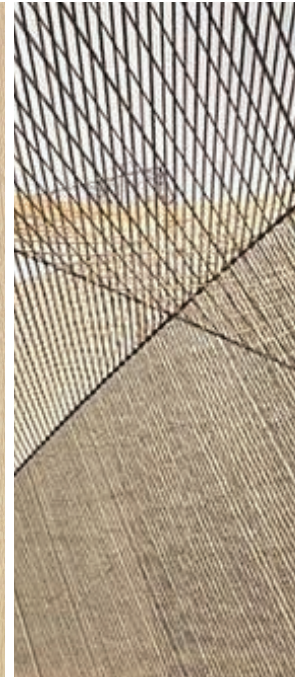
Planting &
Organic materials



Raphia



Prime white
oak



Filtered light



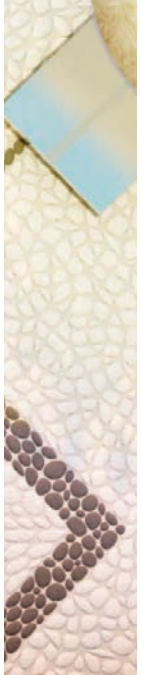
Ivory Venetian
stucco

Bright tones and organic materials are used to create a perfect harmony with the sea view.
These are to be locally sourced wherever possible.

NATURE THE TERRACE

LI
MAS
SOL

yoo
Inspired by
SPACE



Overlooking the sea, the curve of the terrace combined with elegant furnitures and fabrics refers to the yachting world.

NATURE

THE LIVING AREAS



Light colours, soft airy furniture, combined with breathtaking views create a relaxing atmosphere that fuse perfectly with the surrounding nature.

COMMON AREAS



COMMON AREAS THE LANDSCAPE



Organic shaped landscape with high planting around the pool and outdoor lounge area is designed as visual separation to block the view to the parked cars.

COMMON AREAS THE LOBBY

LI
MAS
SOL

yoo
Inspired by
SPACE



Reflective metal rods feature ceiling is inspired by the waves to create dramatic effect of constant flow and change. It is combined with light colours and soft airy furniture to create a contrast and a sophisticated and relaxing atmosphere.

COMMON AREAS THE OUTDOOR LOUNGE



A feature olive tree is wrapped around with an organic bench to serve for a short term waiting area. While the rest of the lounge is more relaxing with high end furniture to allow for a longer and more comfortable stay.

COMMON AREAS THE WATER FEATURE

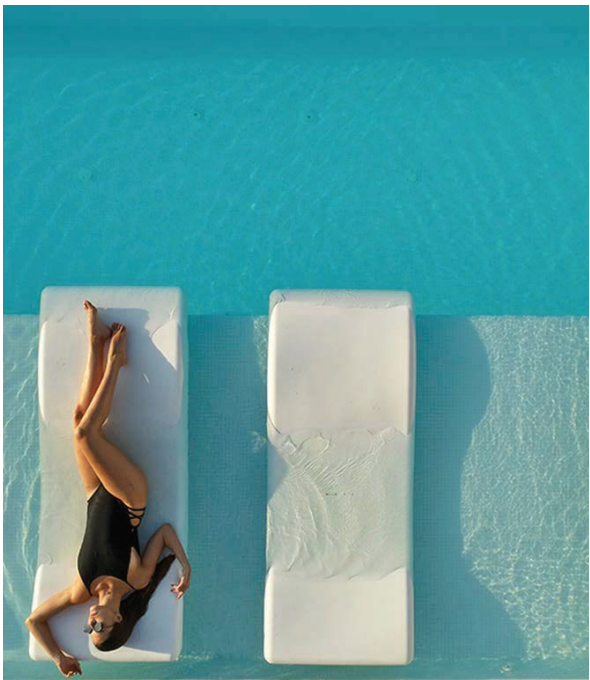


At the pool arrival a pedestrian 'roundabout' with a fun water feature on the floor for the children to play.

COMMON AREAS THE POOL

LI
MAS
SOL

yoo
Inspired by
STARCE



Following the existing oval shape, there are feature steps inside the pool to allow for various depths to accommodate different uses.

COMMON AREAS THE POOL

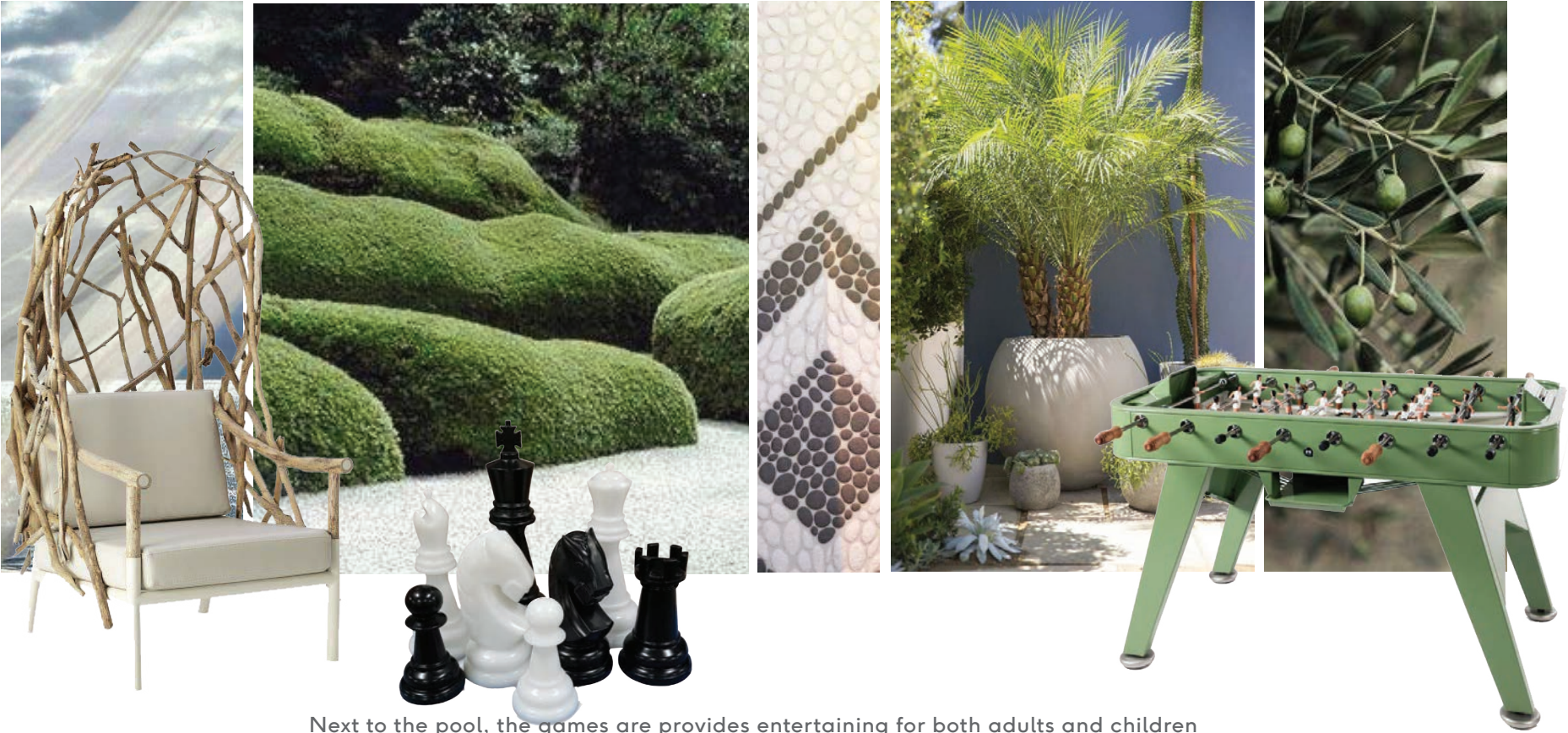


Inspired by the beach, the slope gives a more organic and gradual access to the deeper end of the pool.

COMMON AREAS THE GAMES

LI
MAS
SOL

yoo
Inspired by
SPACE

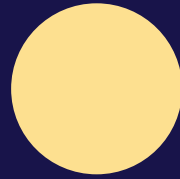


Next to the pool, the games are provides entertaining for both adults and children with the fun foosball table and quirky oversized chess game.

COMMON AREAS THE WINE CELLAR



An indoor wine cellar with an outdoor lounge provides the residents with an exclusive experience in a local setting with quirky Starck elements.



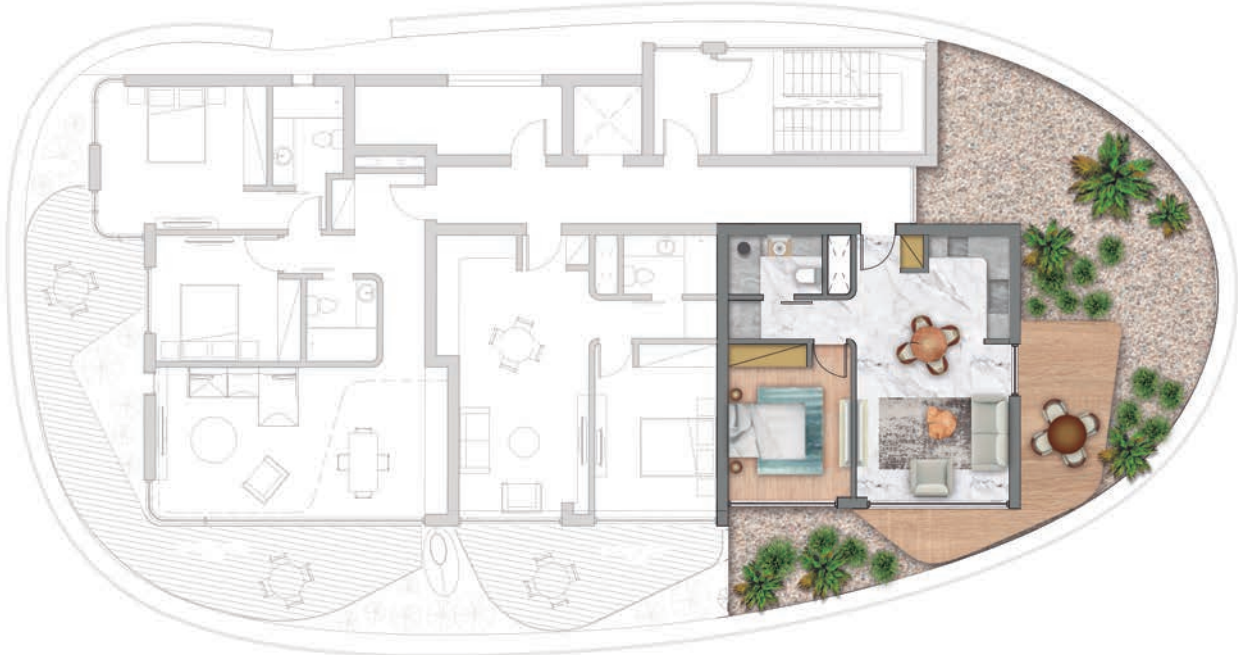
83 EXTRAORDINARY
RESIDENCES ONLY FOR
A PRIVILEGED FEW



ONE BEDROOM APARTMENT

LI
MAS
SOL

yoo
Inspired by
STARBUCK



Seaview apartment with spacious terrace

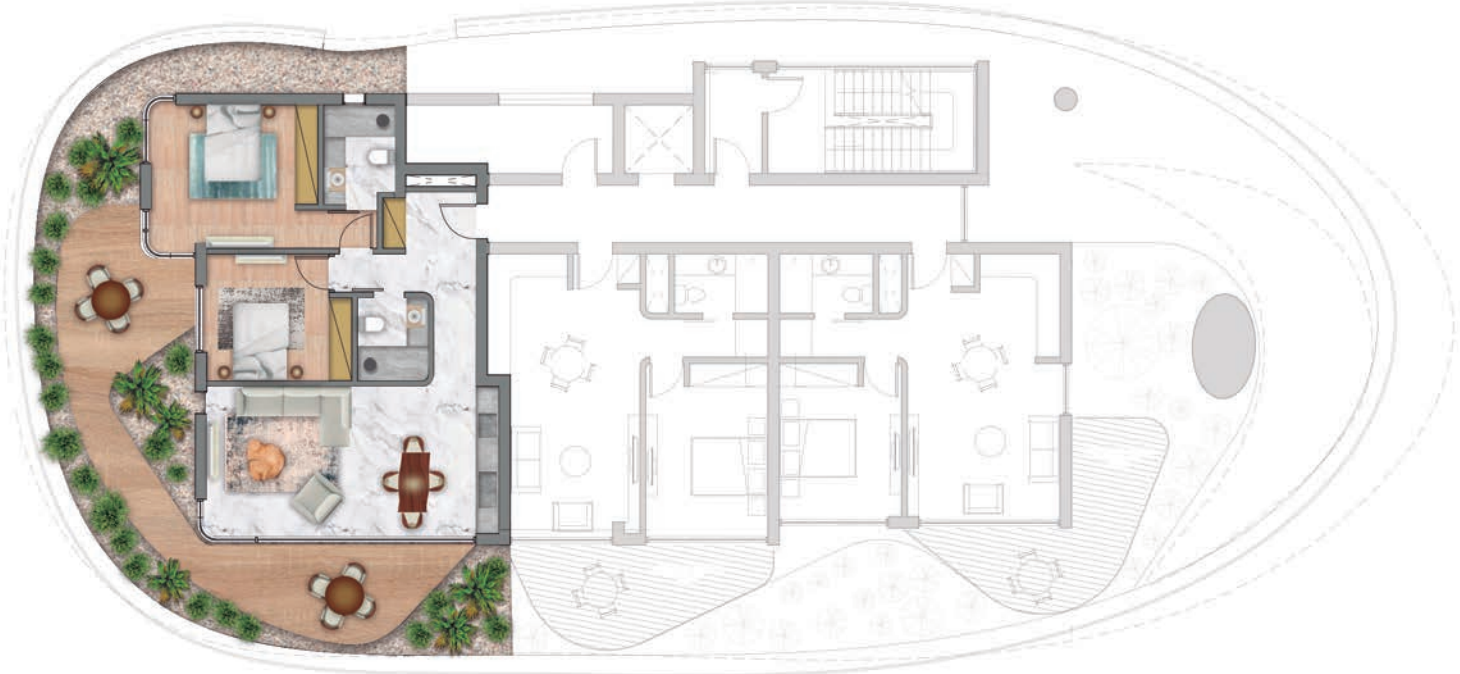
BEDROOM	1
BATHROOMS	1
TOTAL COVERED AREA, SQM	55
TERRACE, SQM	14



TWO BEDROOM APARTMENT

LI
MAS
SOL

yoo
Inspired by
STARBUCK



Seaview apartment with spacious terrace

BEDROOMS	2
BATHROOMS	2
TOTAL COVERED AREA, SQM	91
TERRACE, SQM	30



Sea direction



THREE BEDROOM APARTMENT

LI
MAS
SOL

yoo
Inspired by
STARBUCK



Seaview apartment with spacious terrace

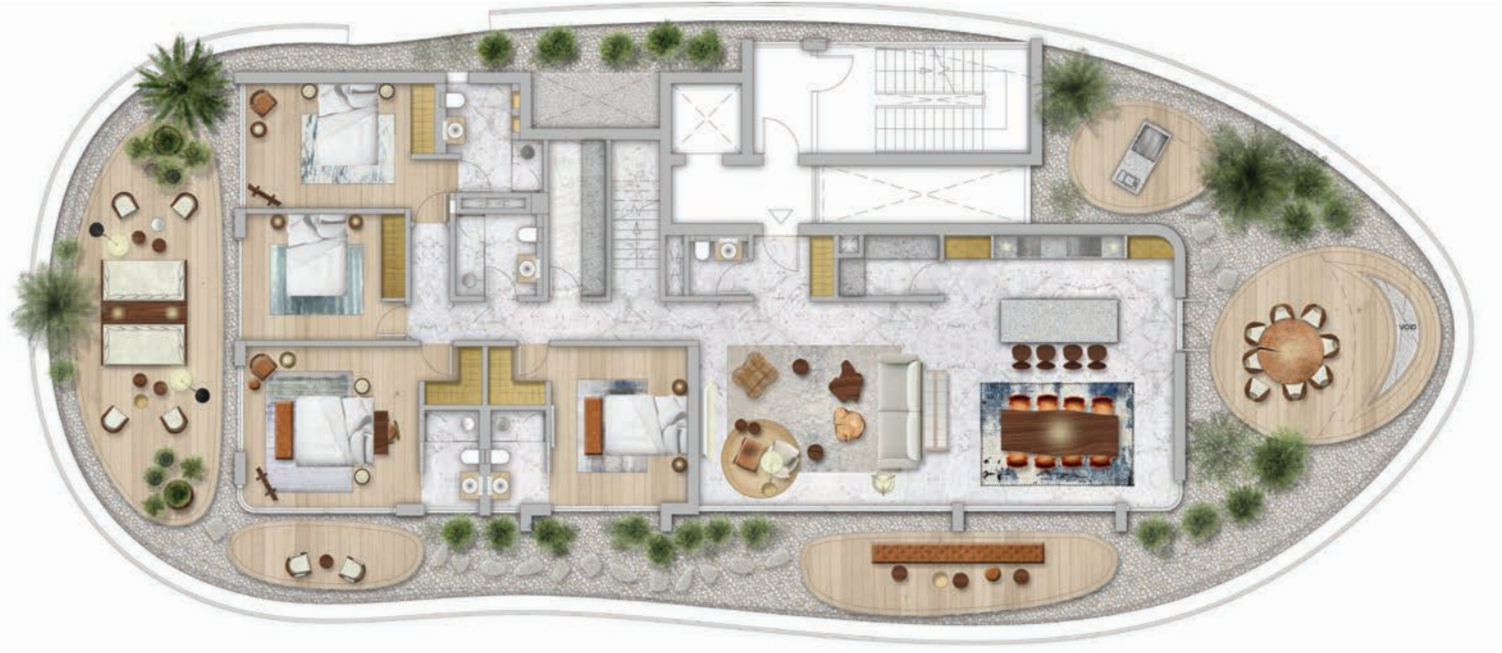
BEDROOMS	3
BATHROOMS	2
TOTAL COVERED AREA, SQM	146
TERRACE, SQM	42



Sea direction



FIVE BEDROOM DUPLEX PENTHOUSE 1ST FLOOR



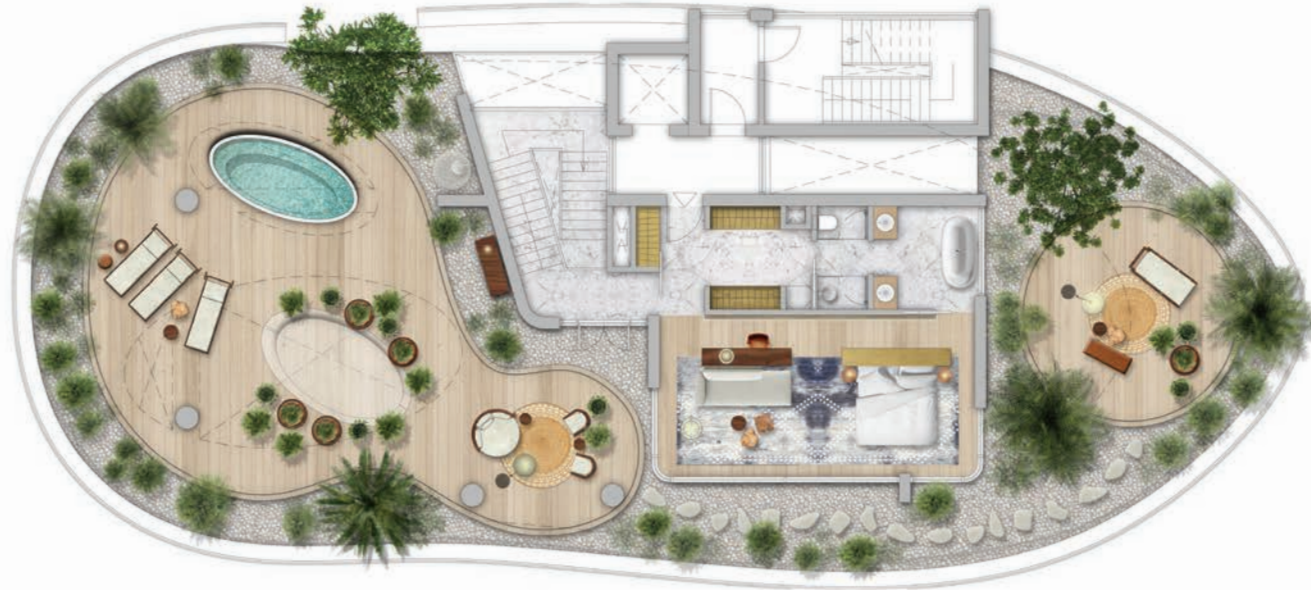
BEDROOMS	5
BATHROOMS	5
LEVELS	2
TOTAL COVERED AREA, SQM	439
COVERED VERANDA, SQM	90
UNCOVERED VERANDA, SQM	280



Sea direction



FIVE BEDROOM DUPLEX PENTHOUSE 1ST FLOOR



BEDROOMS	5
BATHROOMS	5
LEVELS	2
TOTAL COVERED AREA, SQM	439
COVERED VERANDA, SQM	90
UNCOVERED VERANDA, SQM	280

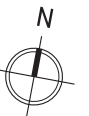


Sea direction



FIVE BEDROOM VILLA GROUND FLOOR

BEDROOMS	5
BATHROOMS	7
PLOT AREA	XXX
TOTAL AREA	329
PRIVATE SWIMMING POOL	1
PRIVATE GYM	1
COVERED VERANDA, SQM	57
PRIVATE ROOF GARDEN	YES



FIVE BEDROOM VILLA FIRST FLOOR

BEDROOMS	5
BATHROOMS	7
PLOT AREA	XXX
TOTAL AREA	329
PRIVATE SWIMMING POOL	1
PRIVATE GYM	1
COVERED VERANDA, SQM	57
PRIVATE ROOF GARDEN	YES



FIVE BEDROOM VILLA BASEMENT

BEDROOMS	5
BATHROOMS	7
PLOT AREA	XXX
TOTAL AREA	329
HOME CINEMA	1
PRIVATE GYM	1
WINE CELLAR	1
SPA ROOM	1





**BENEFITS
WITH YOO**

YOO PORTFOLIO



yooCLUB

YOO CLUB

YOO Worldwide has partnered with THIRDDHOME, the premier luxury property and travel club, to create the YOO Club. Membership gives you access to an amazing portfolio of holiday homes, from contemporary to classic, ski chalets to beach villas.

Residents of the complex can also become members of the YOO club and receive “virtual keys”, which provide the opportunity to stay in projects with a similar brand around the world.



FOUR SEASONS (ANGUILLA)



THE RITZ-CARLTON DESTINATION CLUB (ASPEN)



HARVEST CAYE, BELIZE



PUNTA CANA, DOMINICAN REPUBLIC

YOO
DELIVERS



YOO ADDS VELO CITY

YOO, Moscow
sold prior
to launch

33%

of the 525 apartments
In Dwell95, New York
were rented prior
to launch

50%

Downtown, NYC
sold within
7 days of launch

90%

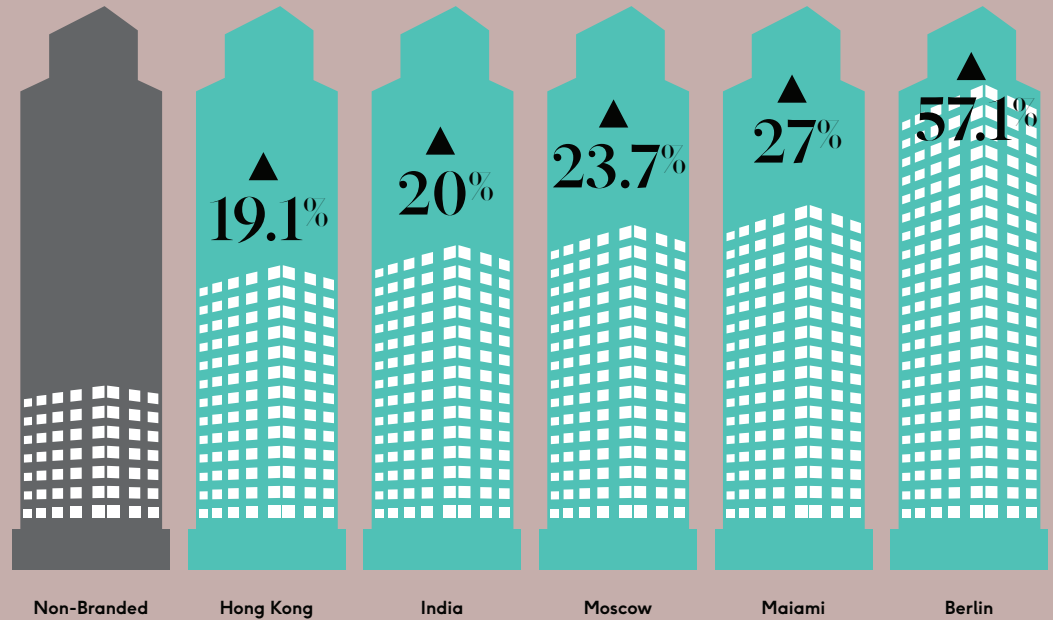
YOO, Punta del Este
apartments sold
after 1 month
of launch

85%

YOO, Toronto
sold within
5 hours of launching

66%

YOO ADDS VALUE



LI MIAS SOL

yoo
Inspired by
STARCK

“EVERYWHERE, I’M LOOKING
TO REACH ELEGANCE
AND INTELLIGENCE.”

—PHILIPPE STARCK